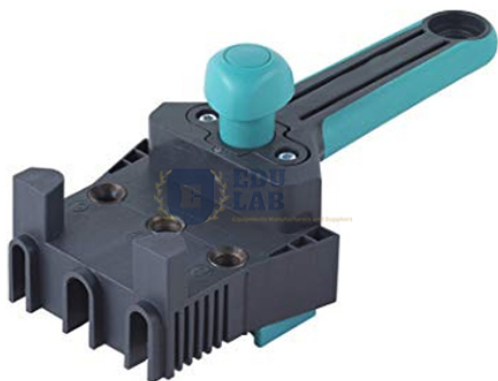


Product Code . EL-WWPT-11690

Dowel Master



Description

Dowel Master




Description:-

The universal and quick dowelling jig for the corner, T-butt and edge-to-edge connections.

For board thicknesses from 12 - 30 mm.

For 6, 8 and 10 mm dowel pins.

```
{ "@context": "https://schema.org/", "@type": "Product", "name": "Dowel Master", "image":  
"http://www.educational-equipments.com/images/catalog/product/3065576DowelMasterWithlogo.jpg",  
"description": "The universal and quick dowelling jig for the corner, T-butt and edge-to-edge  
connections. For board thicknesses from 12 - 30 mm. For 6, 8 and 10 mm dowel pins.", "brand":  
"Educational Lab Equipments", "sku": "5", "gtin8": "5", "gtin13": "5", "gtin14": "5", "mpn": "5",  
"aggregateRating": { "@type": "AggregateRating", "ratingValue": "5", "bestRating": "5", "worstRating":  
"0", "ratingCount": "15" } }
```

Educational Lab Equipments,
#449, HSIIDC, Industrial Area, Saha, Haryana
Direct Contact Details  +91-98173-19615  sales@educational-equipments.com
 www.educational-equipments.com